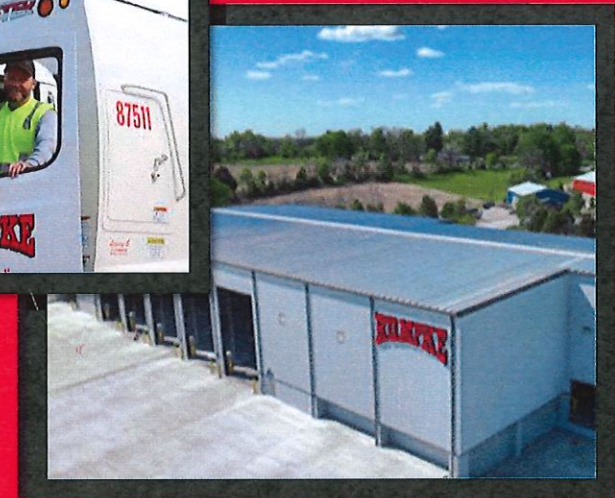
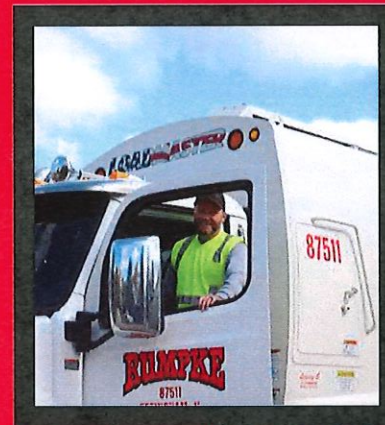


# RUMPKKE

 **BEST  
MANAGED  
COMPANIES**  
Recognizing private company success



## Clark County Transfer Station

Applicant's Meeting



# Tonight's Agenda

- Company Information
- Project Overview
- Permit to Install Request
- Ohio EPA Public Process
- Q&A
- Public Comments (3 min per person)



# Rumpke Waste & Recycling

**90+** Years in Business

**4,100+** Employees

**2,600+** Vehicles

**14** Recycling Facilities

**25** Transfer Stations

**15** Landfills

**2024** Deloitte US Best Managed Company for past 4 years





# The Clark County Project Concept

Site Aerial View (Looking East)

Rendering







## So, what is a transfer station?

- It's a building built in between where the trash is collected and where the landfill is located.
- It's a way to consolidate hauling which ultimately keeps costs down for customers.
- It's essential infrastructure that makes it easier for communities to curb illegal dumping and increase community recycling by offering a convenient drop off solution.





**Video Here**



# The Benefits

- Essential infrastructure
- Convenience and accessibility
- Promotes recycling and sustainability
- Jobs- At full buildout, an estimated 45 - 65 full time jobs
- Investment- \$16 million at full buildout
- Revenues and other features





# The Rumpke Clark County Transfer Station

- A small truck terminal, recycling drop-off, municipal solid waste transfer and administration office
- Extensive planning, buffers and landscaping to aesthetically compliment the surrounding area
- Convenient location/access
- Benefits to the community, businesses and residences





# Operating Standards

- Traffic
- Daytime operations
- Site screening and security
- Nuisance control, housekeeping, the daily removal of waste from the floor and air quality
- Water management
- Material handling, screening and acceptance
- Health and safety training
- Fire suppression





## Design Approach

The property includes 36 acres (14 acres for the Rumpke campus), and the current light industrial zoning is appropriate for this use.

- Utilities
- Signage
- Setbacks, buffer and landscaping
- Stormwater management and grading
- Wetlands and floodplain





# The Draft Plan

- A 2-Story Office
- B 4-Bay Maintenance
- C Fuel Station
- D Rool-Off Trailer Staging
- E Citizen Drop-Off
- F Scale & Scale House
- G Transfer Station
- H Container Storage (PH-2)
- I Detention Pond
- J Possible Athletic Field Locations



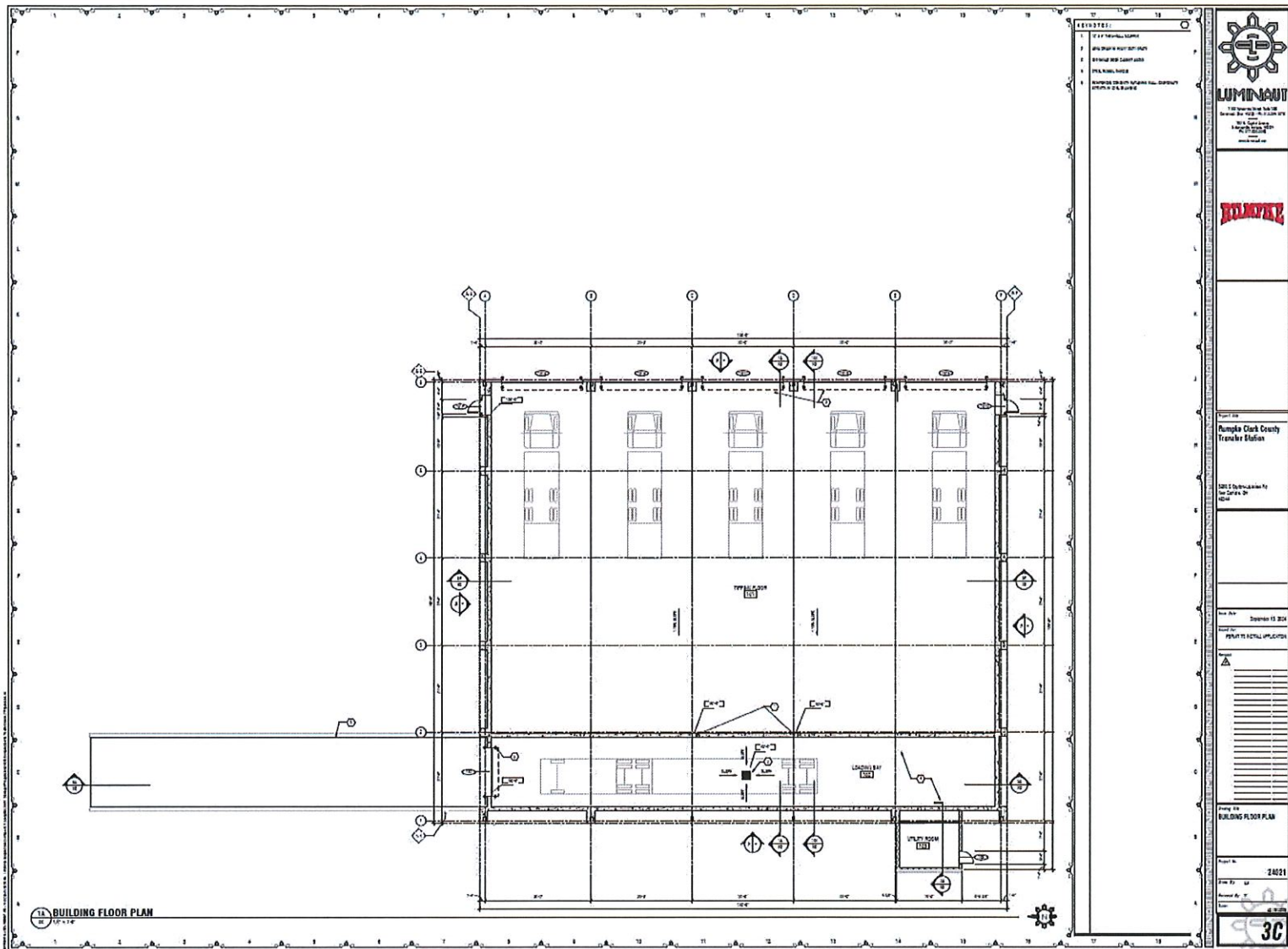
LUMINAUT 

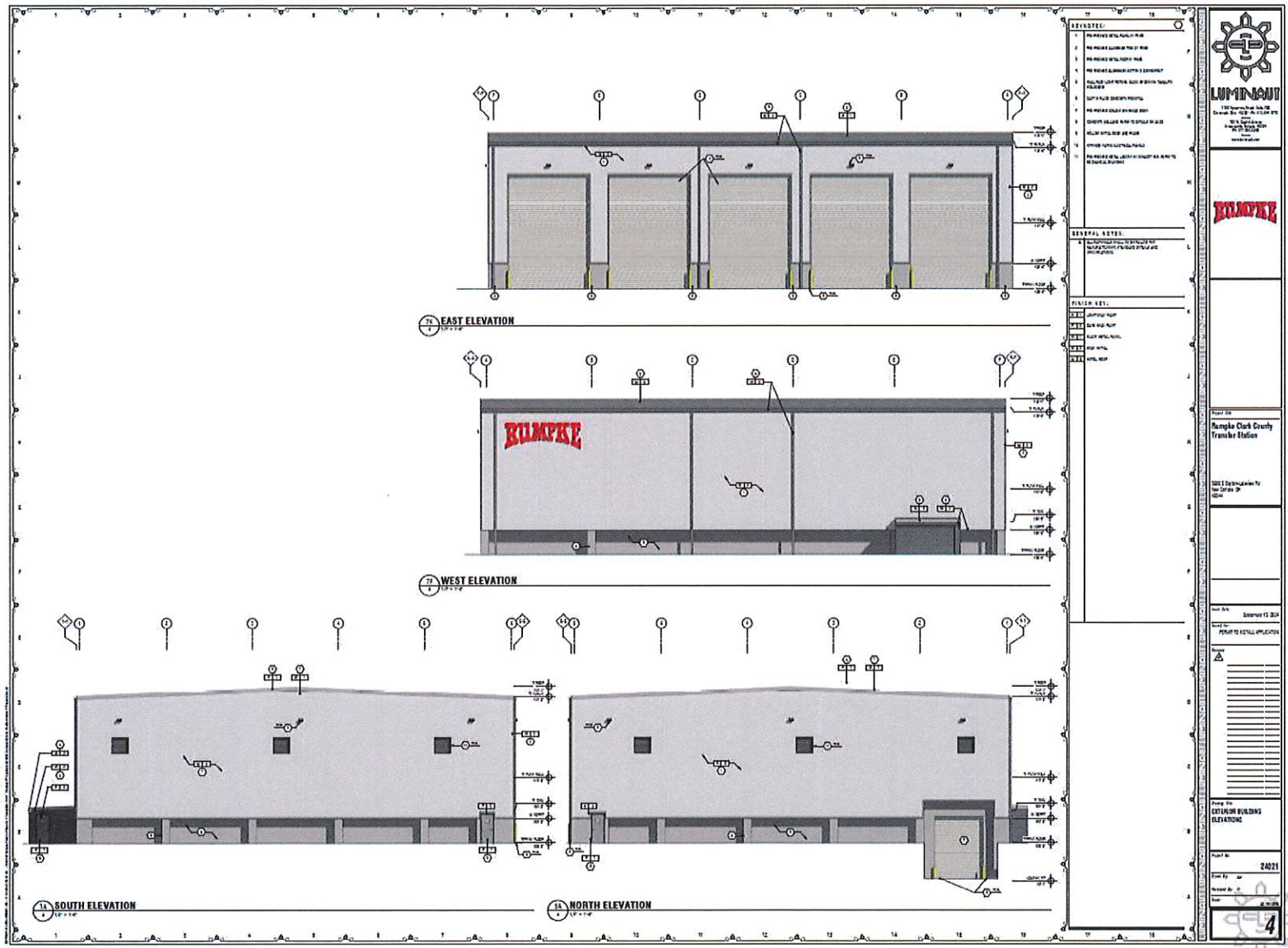












**LUMINAUT**  
1101 South Main St.  
Clark County, TN 37030  
Phone: 615.241.1101  
Fax: 615.241.1102  
www.luminaut.com



- REVISIONS:**
- | NO. | DESCRIPTION               |
|-----|---------------------------|
| 1   | PER RUMPK ELECTRICAL PLAN |
| 2   | PER RUMPK ELECTRICAL PLAN |
| 3   | PER RUMPK ELECTRICAL PLAN |
| 4   | PER RUMPK ELECTRICAL PLAN |
| 5   | PER RUMPK ELECTRICAL PLAN |
| 6   | PER RUMPK ELECTRICAL PLAN |
| 7   | PER RUMPK ELECTRICAL PLAN |
| 8   | PER RUMPK ELECTRICAL PLAN |
| 9   | PER RUMPK ELECTRICAL PLAN |
| 10  | PER RUMPK ELECTRICAL PLAN |
| 11  | PER RUMPK ELECTRICAL PLAN |
| 12  | PER RUMPK ELECTRICAL PLAN |
| 13  | PER RUMPK ELECTRICAL PLAN |
| 14  | PER RUMPK ELECTRICAL PLAN |
| 15  | PER RUMPK ELECTRICAL PLAN |
| 16  | PER RUMPK ELECTRICAL PLAN |
| 17  | PER RUMPK ELECTRICAL PLAN |
| 18  | PER RUMPK ELECTRICAL PLAN |
| 19  | PER RUMPK ELECTRICAL PLAN |
| 20  | PER RUMPK ELECTRICAL PLAN |
| 21  | PER RUMPK ELECTRICAL PLAN |
| 22  | PER RUMPK ELECTRICAL PLAN |
| 23  | PER RUMPK ELECTRICAL PLAN |
| 24  | PER RUMPK ELECTRICAL PLAN |
| 25  | PER RUMPK ELECTRICAL PLAN |
| 26  | PER RUMPK ELECTRICAL PLAN |
| 27  | PER RUMPK ELECTRICAL PLAN |
| 28  | PER RUMPK ELECTRICAL PLAN |
| 29  | PER RUMPK ELECTRICAL PLAN |
| 30  | PER RUMPK ELECTRICAL PLAN |
| 31  | PER RUMPK ELECTRICAL PLAN |
| 32  | PER RUMPK ELECTRICAL PLAN |
| 33  | PER RUMPK ELECTRICAL PLAN |
| 34  | PER RUMPK ELECTRICAL PLAN |
| 35  | PER RUMPK ELECTRICAL PLAN |
| 36  | PER RUMPK ELECTRICAL PLAN |
| 37  | PER RUMPK ELECTRICAL PLAN |
| 38  | PER RUMPK ELECTRICAL PLAN |
| 39  | PER RUMPK ELECTRICAL PLAN |
| 40  | PER RUMPK ELECTRICAL PLAN |
| 41  | PER RUMPK ELECTRICAL PLAN |
| 42  | PER RUMPK ELECTRICAL PLAN |
| 43  | PER RUMPK ELECTRICAL PLAN |
| 44  | PER RUMPK ELECTRICAL PLAN |
| 45  | PER RUMPK ELECTRICAL PLAN |
| 46  | PER RUMPK ELECTRICAL PLAN |
| 47  | PER RUMPK ELECTRICAL PLAN |
| 48  | PER RUMPK ELECTRICAL PLAN |
| 49  | PER RUMPK ELECTRICAL PLAN |
| 50  | PER RUMPK ELECTRICAL PLAN |
| 51  | PER RUMPK ELECTRICAL PLAN |
| 52  | PER RUMPK ELECTRICAL PLAN |
| 53  | PER RUMPK ELECTRICAL PLAN |
| 54  | PER RUMPK ELECTRICAL PLAN |
| 55  | PER RUMPK ELECTRICAL PLAN |
| 56  | PER RUMPK ELECTRICAL PLAN |
| 57  | PER RUMPK ELECTRICAL PLAN |
| 58  | PER RUMPK ELECTRICAL PLAN |
| 59  | PER RUMPK ELECTRICAL PLAN |
| 60  | PER RUMPK ELECTRICAL PLAN |
| 61  | PER RUMPK ELECTRICAL PLAN |
| 62  | PER RUMPK ELECTRICAL PLAN |
| 63  | PER RUMPK ELECTRICAL PLAN |
| 64  | PER RUMPK ELECTRICAL PLAN |
| 65  | PER RUMPK ELECTRICAL PLAN |
| 66  | PER RUMPK ELECTRICAL PLAN |
| 67  | PER RUMPK ELECTRICAL PLAN |
| 68  | PER RUMPK ELECTRICAL PLAN |
| 69  | PER RUMPK ELECTRICAL PLAN |
| 70  | PER RUMPK ELECTRICAL PLAN |
| 71  | PER RUMPK ELECTRICAL PLAN |
| 72  | PER RUMPK ELECTRICAL PLAN |
| 73  | PER RUMPK ELECTRICAL PLAN |
| 74  | PER RUMPK ELECTRICAL PLAN |
| 75  | PER RUMPK ELECTRICAL PLAN |
| 76  | PER RUMPK ELECTRICAL PLAN |
| 77  | PER RUMPK ELECTRICAL PLAN |
| 78  | PER RUMPK ELECTRICAL PLAN |
| 79  | PER RUMPK ELECTRICAL PLAN |
| 80  | PER RUMPK ELECTRICAL PLAN |
| 81  | PER RUMPK ELECTRICAL PLAN |
| 82  | PER RUMPK ELECTRICAL PLAN |
| 83  | PER RUMPK ELECTRICAL PLAN |
| 84  | PER RUMPK ELECTRICAL PLAN |
| 85  | PER RUMPK ELECTRICAL PLAN |
| 86  | PER RUMPK ELECTRICAL PLAN |
| 87  | PER RUMPK ELECTRICAL PLAN |
| 88  | PER RUMPK ELECTRICAL PLAN |
| 89  | PER RUMPK ELECTRICAL PLAN |
| 90  | PER RUMPK ELECTRICAL PLAN |
| 91  | PER RUMPK ELECTRICAL PLAN |
| 92  | PER RUMPK ELECTRICAL PLAN |
| 93  | PER RUMPK ELECTRICAL PLAN |
| 94  | PER RUMPK ELECTRICAL PLAN |
| 95  | PER RUMPK ELECTRICAL PLAN |
| 96  | PER RUMPK ELECTRICAL PLAN |
| 97  | PER RUMPK ELECTRICAL PLAN |
| 98  | PER RUMPK ELECTRICAL PLAN |
| 99  | PER RUMPK ELECTRICAL PLAN |
| 100 | PER RUMPK ELECTRICAL PLAN |

**GENERAL NOTES:**

1. ALL DIMENSIONS ARE TO FACE UNLESS NOTED OTHERWISE.
2. ALL MATERIALS SHALL BE NEW UNLESS NOTED OTHERWISE.
3. ALL WORK SHALL BE IN ACCORDANCE WITH THE LATEST EDITIONS OF THE BUILDING CODES AND SPECIFICATIONS.
4. ALL ELECTRICAL WORK SHALL BE IN ACCORDANCE WITH THE NATIONAL ELECTRICAL CODE (NEC) AND THE LATEST EDITIONS OF THE NATIONAL ELECTRICAL SAFETY CODE (NESC).
5. ALL MECHANICAL WORK SHALL BE IN ACCORDANCE WITH THE AMERICAN SOCIETY OF MECHANICAL ENGINEERS (ASME) AND THE LATEST EDITIONS OF THE MECHANICAL ENGINEERING CODES.
6. ALL PLUMBING WORK SHALL BE IN ACCORDANCE WITH THE PLUMBING CODE AND THE LATEST EDITIONS OF THE PLUMBING SPECIFICATIONS.
7. ALL PAINTING SHALL BE IN ACCORDANCE WITH THE PAINTING CODE AND THE LATEST EDITIONS OF THE PAINTING SPECIFICATIONS.
8. ALL FINISHES SHALL BE IN ACCORDANCE WITH THE FINISHES CODE AND THE LATEST EDITIONS OF THE FINISHES SPECIFICATIONS.
9. ALL WORK SHALL BE COMPLETED WITHIN THE SPECIFIED TIME FRAME.
10. ALL WORK SHALL BE SUBJECT TO INSPECTION AND APPROVAL BY THE CLERK OF THE DISTRICT.

**REVISION KEY:**

NO.	DESCRIPTION
1	REVISION KEY
2	REVISION KEY
3	REVISION KEY
4	REVISION KEY
5	REVISION KEY
6	REVISION KEY
7	REVISION KEY
8	REVISION KEY
9	REVISION KEY
10	REVISION KEY
11	REVISION KEY
12	REVISION KEY
13	REVISION KEY
14	REVISION KEY
15	REVISION KEY
16	REVISION KEY
17	REVISION KEY
18	REVISION KEY
19	REVISION KEY
20	REVISION KEY
21	REVISION KEY
22	REVISION KEY
23	REVISION KEY
24	REVISION KEY
25	REVISION KEY
26	REVISION KEY
27	REVISION KEY
28	REVISION KEY
29	REVISION KEY
30	REVISION KEY
31	REVISION KEY
32	REVISION KEY
33	REVISION KEY
34	REVISION KEY
35	REVISION KEY
36	REVISION KEY
37	REVISION KEY
38	REVISION KEY
39	REVISION KEY
40	REVISION KEY
41	REVISION KEY
42	REVISION KEY
43	REVISION KEY
44	REVISION KEY
45	REVISION KEY
46	REVISION KEY
47	REVISION KEY
48	REVISION KEY
49	REVISION KEY
50	REVISION KEY
51	REVISION KEY
52	REVISION KEY
53	REVISION KEY
54	REVISION KEY
55	REVISION KEY
56	REVISION KEY
57	REVISION KEY
58	REVISION KEY
59	REVISION KEY
60	REVISION KEY
61	REVISION KEY
62	REVISION KEY
63	REVISION KEY
64	REVISION KEY
65	REVISION KEY
66	REVISION KEY
67	REVISION KEY
68	REVISION KEY
69	REVISION KEY
70	REVISION KEY
71	REVISION KEY
72	REVISION KEY
73	REVISION KEY
74	REVISION KEY
75	REVISION KEY
76	REVISION KEY
77	REVISION KEY
78	REVISION KEY
79	REVISION KEY
80	REVISION KEY
81	REVISION KEY
82	REVISION KEY
83	REVISION KEY
84	REVISION KEY
85	REVISION KEY
86	REVISION KEY
87	REVISION KEY
88	REVISION KEY
89	REVISION KEY
90	REVISION KEY
91	REVISION KEY
92	REVISION KEY
93	REVISION KEY
94	REVISION KEY
95	REVISION KEY
96	REVISION KEY
97	REVISION KEY
98	REVISION KEY
99	REVISION KEY
100	REVISION KEY

Project No. 240211  
Rumpke Clark County Transfer Station

100% Construction  
Not Open to Public

Project No. 240211  
Rumpke Clark County Transfer Station

100% Construction  
Not Open to Public

Project No. 240211  
Rumpke Clark County Transfer Station

100% Construction  
Not Open to Public

Project No. 240211  
Rumpke Clark County Transfer Station

100% Construction  
Not Open to Public



## Current Process

Here's an update on plan submittals (Site Plan & SWMD) and Rumpke's Permit to Install Application (PTI).

- **Clark County SWMD Review Package** – Submitted plan November 18, 2024
- **Solid Waste PTI Application** – Submitted plan week of November 18, 2024
- **Site Plan for Count-** Approval - Will submit in early January 2025.
- **Building Plans** – Our architect, Luminaut, has finalized plans and is conducting internal meetings with Rumpke's operations, information technology, safety, electrical and engineering teams







## Timeline to Completion

- Accepting bids from general contractors including Elford, Inc., HGC, Furgeson and Arcon Builders
- The selected contractor will manage the project and prepare bids to subcontract portions of the project. Our goal is to target local contractors for this work
- Pending the approval process, we expect to break ground in late Q1 2025
- Construction completion is expected by fall 2025
- Grand opening is expected by early 2026





## Beyond Our Grand Opening

In addition to bringing free job training and careers to the area that feature great pay and benefits, Rumpke strives to be an active part of the communities we serve.

- Hosting onsite events with the Clark County Solid Waste Management District to increase recycling, clean-ups and support their overall objectives
- Sponsoring clean-ups and community events
- Partnering with local schools to offer tours and environmental education
- Initiating a scholarship program for local graduating high school seniors
- Delivering transparent communications to community



**THANK YOU**





# Ohio EPA Overview

Rumpke Waste &  
Recycling  
Applicant's Meeting  
Clark Co.  
Transfer Station  
Permit-to-Install (PTI)



**Environmental  
Protection  
Agency**







**Environmental  
Protection  
Agency**

## Mission & Values

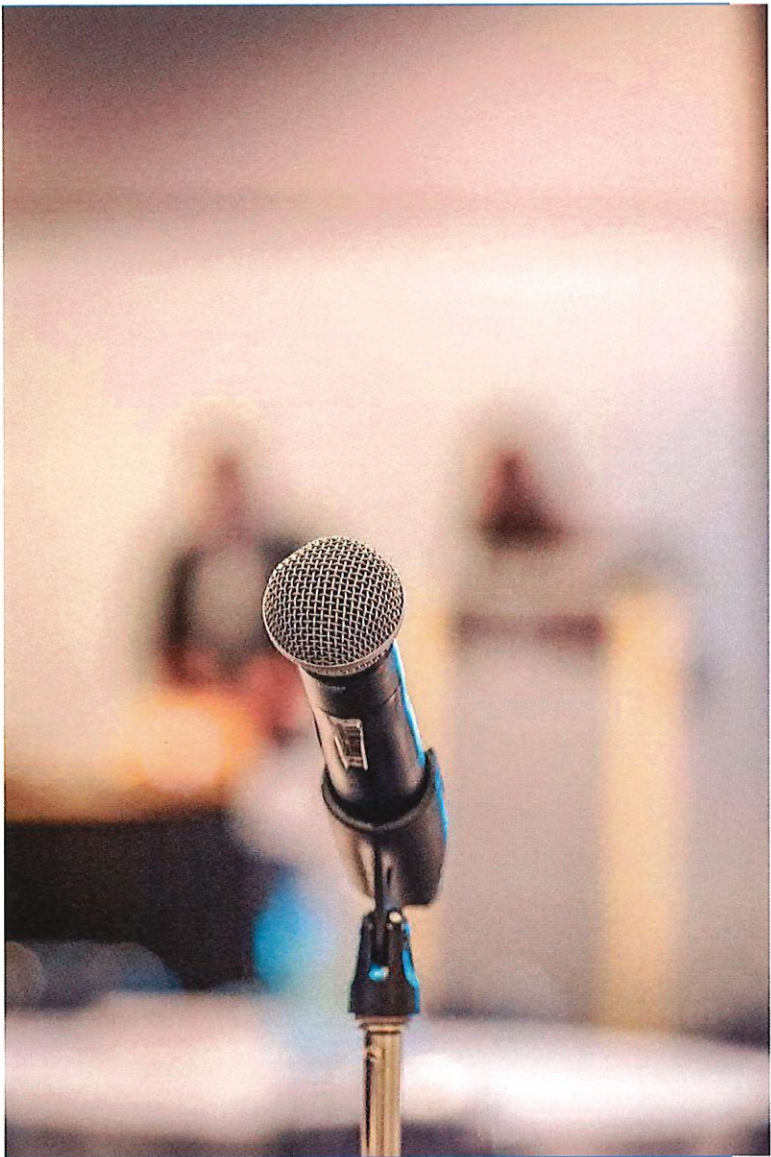
*The Ohio Environmental Protection Agency is a trusted leader and environmental steward using innovation, quality service, and public involvement to ensure a safe and healthy environment for all Ohioans.*

*Ohio EPA's goal is to protect the environment and public health by ensuring compliance with environmental laws and demonstrating leadership in environmental stewardship.*



**Environmental  
Protection  
Agency**





# Public Participation

- Applicant's Meeting required by state law
- Public notice of the application
- Draft permit
- Public Information Session
- Public Hearing (typically held with Info. Session)
- Public comment period
- File review options:
  - Ohio EPA's website: eDocs Secondary ID# SWTF025589

# Transfer Station Permitting Timeline



- Applicant/Consultant prepares permit
- PTI Application - received Nov. 22, 2024
- Applicant's Meeting – held Dec. 17, 20024
- Ohio EPA Review and Deficiency Comments (typically within 90 days)
- Facility Responds to Ohio EPA's Comments
- Multiple deficiency letters may be sent during review process



# Transfer Station Permitting Timeline



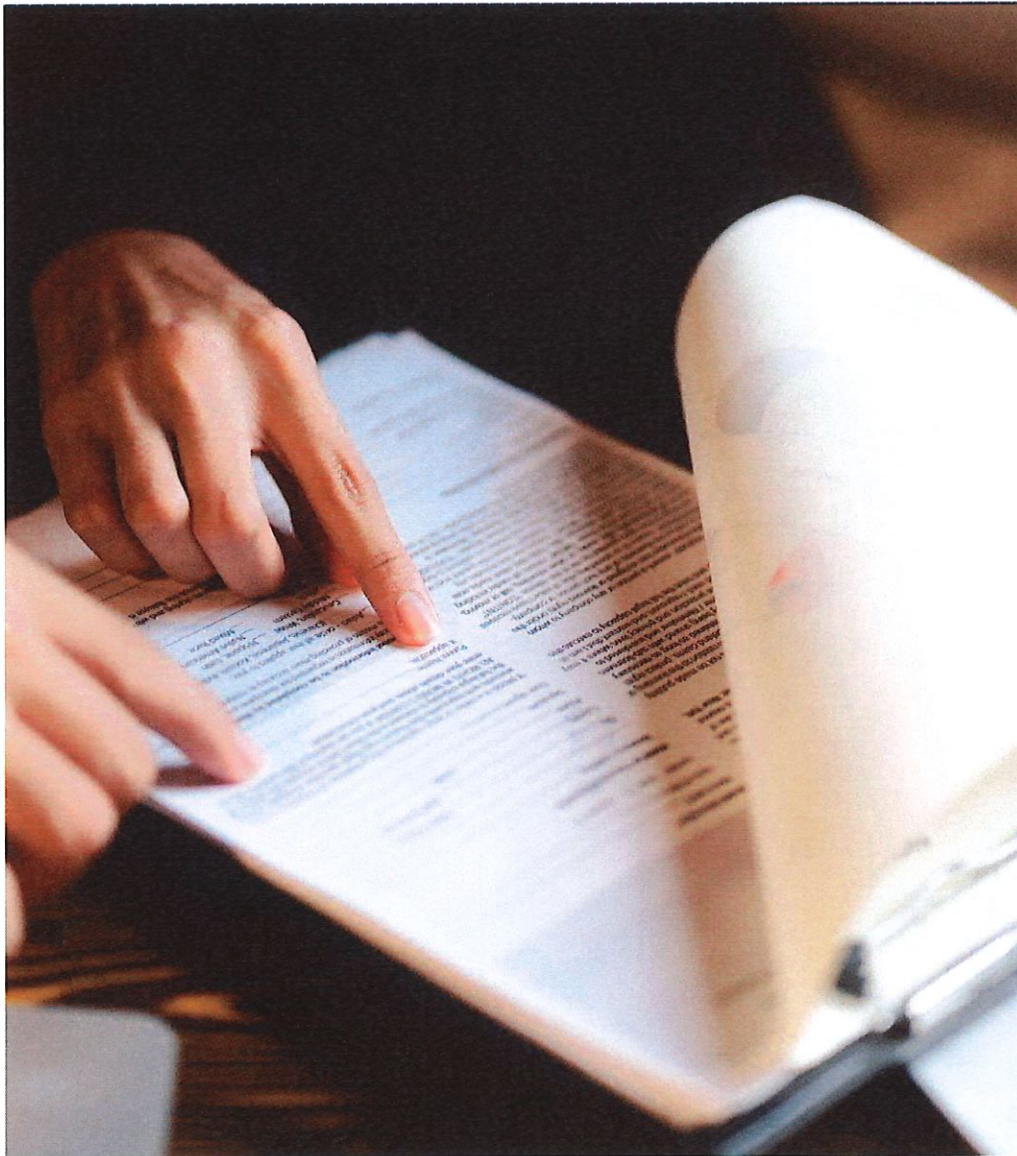
- When review cycle is complete, Ohio EPA issues draft permit
- Public comment period (typically 45 days)
- Public Information Session and Public Hearing
- Final Action (approval or denial)
- Appeal Rights (Director's action may be appealed)

## Issues Outside of Ohio EPA's Authority

- Need or popularity (applicant's decision)
- Local Land Use and Zoning (local zoning and planning)
- Origin of Waste (Interstate Commerce Clause of U.S. Constitution)
- Road Traffic and Noise (ODOT/county/township)
- Property Value Impact







# Ohio EPA Review

- OAC Rule 3745-555-300
  - Application procedures
- OAC Rule 3745-555-310
  - Specifies content of application
    - Plan sheets
    - Plan drawings
    - Reports
- OAC Rule 3745-555-110, 120, 130, 140, and 150
  - Siting criteria
- OAC Rule 3745-555-20
  - Variances, exemptions



## For More Information

### PTI Application

<http://edocpub.epa.ohio.gov/publicportal/edochome.aspx>

### Search

Secondary ID: MSWL018754

Doc type: Permit

### Ohio EPA Fact Sheets

*Public Involvement Requirements for Solid Waste Permits*

[https://epa.ohio.gov/static/Portals/34/document/guidance/gd\\_212.pdf](https://epa.ohio.gov/static/Portals/34/document/guidance/gd_212.pdf)

*Becoming Involved in Ohio EPA's Solid Waste Permitting Process*

[https://epa.ohio.gov/static/Portals/34/document/guidance/gd\\_208.pdf](https://epa.ohio.gov/static/Portals/34/document/guidance/gd_208.pdf)

The application was received at Ohio EPA on Nov. 22, 2024



# Thank You

**Michael Harris, REHS**

District Engineer

Division of Materials & Waste  
Management

937.285.608940.270.8795

[Michael.Harris@epa.ohio.gov](mailto:Michael.Harris@epa.ohio.gov)

Follow Ohio EPA on



**Environmental  
Protection  
Agency**